

# GENERAL PURPOSE MACHINERY MOUNTS

## Metric

MOUNT MODEL	RECOMMENDED WORKING LOAD PER MOUNT kg	BASE FOOTPRINT L X W mm	BASE BOLT CENTERS C mm	BASE BOLT DIAMETER d mm	NUMBER OF BOLTS	BASE THICKNESS t mm	BOLT DIAMETER mm	MIN FREE HEIGHT J mm	WEIGHT kg
GPM6-6B	1.0-20	91 x 52	65	6	2	8	6	20	0.1
GPM7-12B	20-120	112 x 64	75-89	8	2	12	12	31	0.2
GPM7FS-12B	20-120	112 x 64	75-89	10	2	12	12	31	0.2
GPM10-12B	40-250	140 x 75	98-110	10	2	12	12	40	0.35
GPM10-16B	40-250	140 x 75	98-110	12	2	12	16	40	0.35
GPM10-1/2"B	40-250	140 x 75	98-110	12	2	12	1/2"	40	0.35
GPM10FS-16B	50-300	140 x 75	98-110	12	2	12	16	40	0.35
GPM10FS-1/2"B	50-300	140 x 75	98-110	12	2	12	1/2"	40	0.35
GPM10FS-16B	75-300	177 x 98	127	12	2	15	16	60	0.6
GPM15FS-20B	75-300	177 x 98	127	12	2	15	20	60	0.6

FS - Denotes Fail Safe mount  
Metric Coarse bolt thread, unless stated.

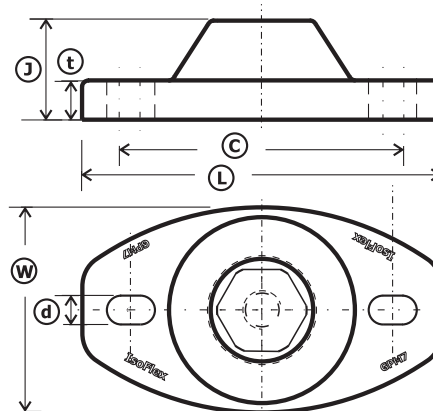
### Model: GPM-10

GPM10 = model number  
10 = thread size  
B = bolt type

Mount Colour	Hardness SDH-A
Yellow	50
Red	60
Black	70
Royal Blue	75
Green	80
Grey	90



### Models: GPM Range



\*Specific mount performance data sheets are available at [isoflex.com.au](http://isoflex.com.au) and [isoflextech.com](http://isoflextech.com)

Copyright © 2016 IsoFlex Technologies Pty Ltd. Specifications are subject to change without notice.