

4

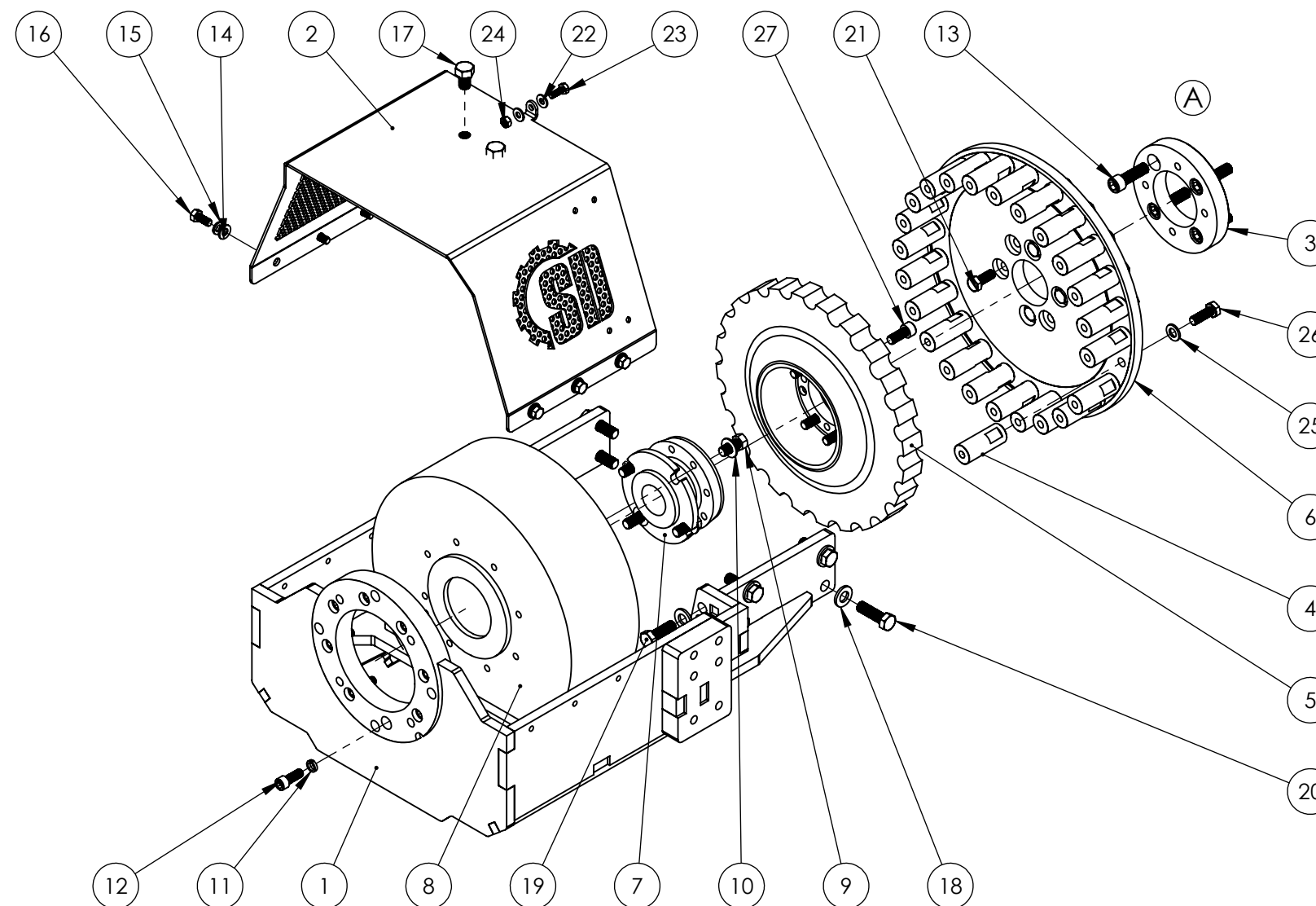
3

2

1

ITEM NO.	PART NUMBER	Description	Revision	Material	QTY.
1	PA10124C	ASSEMBLY, BONNET, SEADRIVE, 1000LB PITTS, SAE C PAD. CUMMINS QSC 8.3, QSL 9.0. USES P/N 34401BC AND 33744D, SUPERSEDES PA10124B	A		1
2	PA10155A	COVER, BONNET, SEADRIVE, FOR USE WITH CUMMINS 8.3 AND 9.0, BONNET PART 34427A	A		1
3	34426B	ADAPTER, CUMMINS 8.3, ADAPTS FRONT DAMPER TO SPICER PATTERN	A	1018 STEEL	1
4	37495	CENTAMAX B BUSHES, SIZE 800 & 1200	C	CD 1045	24
5	37498-AFM S50	TORSIONAL COUPLING, E-RUBBER ELEMENT, CENTAMAX SIZE 800 TYPE, NATURAL RUBBER, 50 SHORE.	A		1
6	37488	ADAPTER, SPICER 1410 TO CENTAMAX B	D	A36	1
7	37490	ADAPTER, CENTAMAX 800 TO PITTS H49 CLUTCH	A	1018	1
8	CL-P1000CS-E12-1	ELECTRIC CLUTCH, 1000 LBS-FT, SAE C SPLINE, 12V			1
9	7/16"-20 X 1", HEX HEAD, GRADE 8, ZINC PLATED	SHOP SUPPLIES			4
10	7/16" FLAT WASHER, GRADE 8, ZINC PLATED	SHOP SUPPLIES			4
11	3/8", LOCK WASHER, HI-COLLAR, GRADE 9, PLAIN FINISH	INCLUDED WITH CLUTCH			8
12	3/8"-16 X 1", SHCS, GRADE 9, PLAIN FINISH	INCLUDED WITH CLUTCH			8
13	M12 X 1.75 X 40, SHCS, CLASS 12.9, PLAIN FINISH	SHOP SUPPLIES			4
14	5/16" FLAT WASHER, 18-8 SS, PLAIN FINISH	SHOP SUPPLIES			6
15	5/16" LOCK WASHER, 18-8 SS, PLAIN FINISH	SHOP SUPPLIES			6
16	5/16"-18 X 3/4", HEX HEAD, 18-8 SS, PLAIN FINISH	SHOP SUPPLIES			6
17	1/2"-13 X 3/4", HEX HEAD, 18-SS, PLAIN FINISH	SHOP SUPPLIES			2
18	M12, FLAT WASHER, CLASS 10.9, ZINC PLATED	SHOP SUPPLIES			12
19	M12 X 1.75 X 35, HEX HEAD, CLASS 10.9, ZINC PLATED	SHOP SUPPLIES			4
20	M12 X 1.75 X 40, HEX HEAD, CLASS 10.9, ZINC PLATED	SHOP SUPPLIES			8
21	M10 X 1.25 X 25, HEX HEAD, CLASS 10.9, ZINC PLATED	SHOP SUPPLIES			4
22	1/4", FLAT WASHER, 18-8 SS	SHOP SUPPLIES			4
23	1/4"-20 X 3/4", HEX HEAD, 18-8 SS, PLAIN FINISH	SHOP SUPPLIES			2
24	1/4"-20, NYLOC NUT, 18-8 SS, PLAIN FINISH	SHOP SUPPLIES			2
25	M10, FLAT WASHER, CLASS 10.9, ZINC PLATED	SHOP SUPPLIES			24
26	M10 X 1.25 X 30, HEX HEAD, CLASS 10.9, ZINC PLATED	SHOP SUPPLIES			24
27	M10 X 1.25 X 25, SHCS, CLASS 12.9, PLAIN FINISH	SHOP SUPPLIES	A		8
28	34074A	GREASE, SEADRIVE, .6OZ SYRINGE. *NOT SHOWN*	A		1
29	33827A	LOCTITE, LOCTITE, CAPSULE BOTTLE, BLUE 242, .05ML. INCLUDE IF SHIPPING LOOSE	A		1

REVISIONS				
ZONE	REV.	DESCRIPTION	DATE	APPROVED
B1	A	INITIAL RELEASE OF VERSION 1 WITH CENTAMAX COUPLING	6/21/2022	System Administrator



MER
EQUIPMENT

UNLESS OTHERWISE SPECIFIED:

DIMENSIONS ARE IN INCHES
TOLERANCES:
FRACTIONAL $\pm 1/32$
ANGULAR: MACH ± 1 BEND ± 1
TWO PLACE DECIMAL $\pm .030$
THREE PLACE DECIMAL $\pm .005$

PROPRIETARY AND CONFIDENTIAL

THE INFORMATION CONTAINED IN THIS DRAWING IS THE SOLE PROPERTY OF MER EQUIPMENT. ANY REPRODUCTION IN PART OR AS A WHOLE WITHOUT THE WRITTEN PERMISSION OF MER EQUIPMENT IS PROHIBITED.

NAME	DATE
DRAWN BY: TA	06/21/2022
APPROVED BY: System Administrator	06/21/2022
MATERIAL:	
FINISH:	
WEIGHT:	
COMMENTS	

DWG. NO.	
SD-CU03P09-1-CM800B-DRA	
DESC:	
SEADRIVE, fPTO, CUMMINS, QSL9. H49 CLUTCH, SAE C PAD. FOR USE WITH DA9577 OR DA9150. REQUIRES 3939088	
SIZE	REV
B	A
PART NO.	
SD-CU03P09-1-CM800B	
DO NOT SCALE DRAWING	
SHEET 1 OF 2	

4

3

2

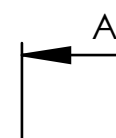
1

4

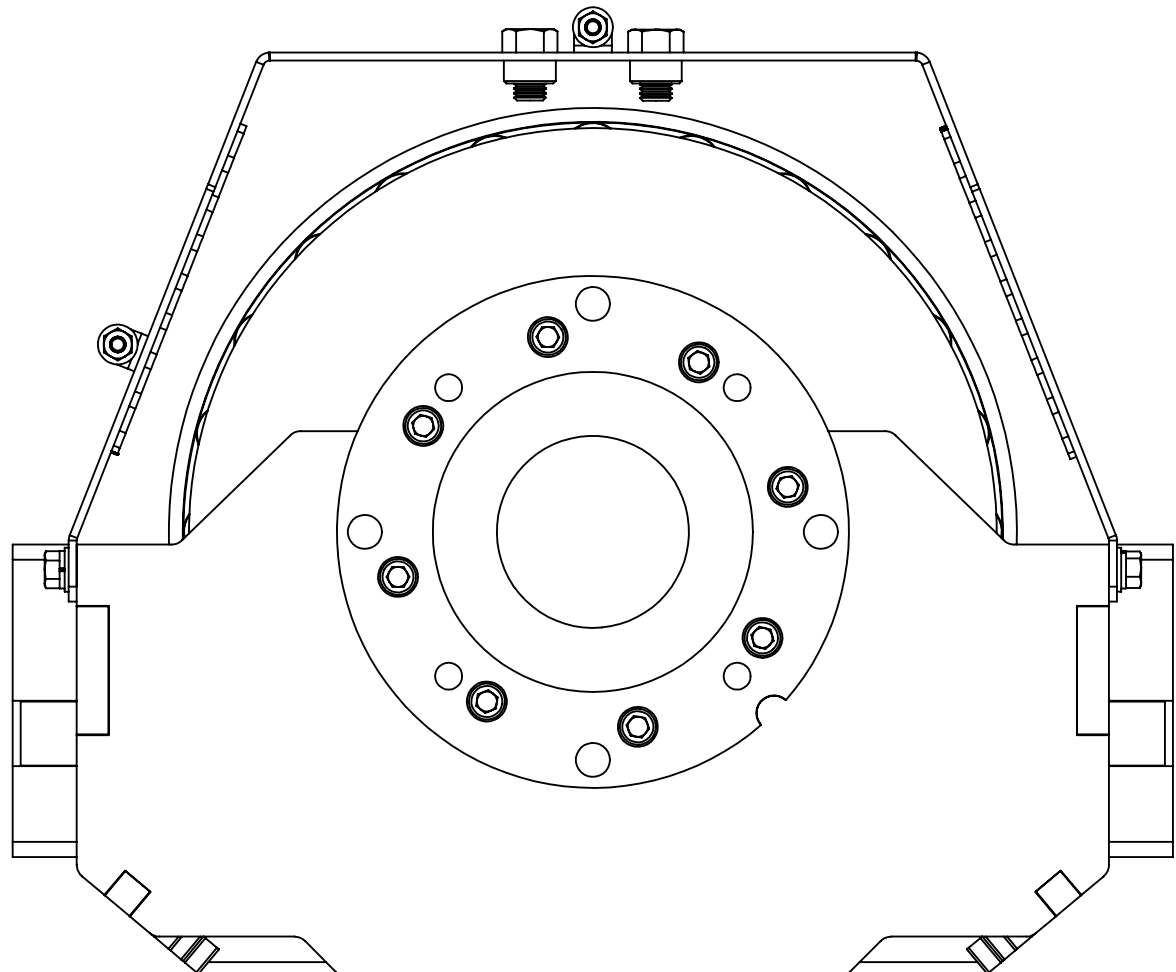
3

2

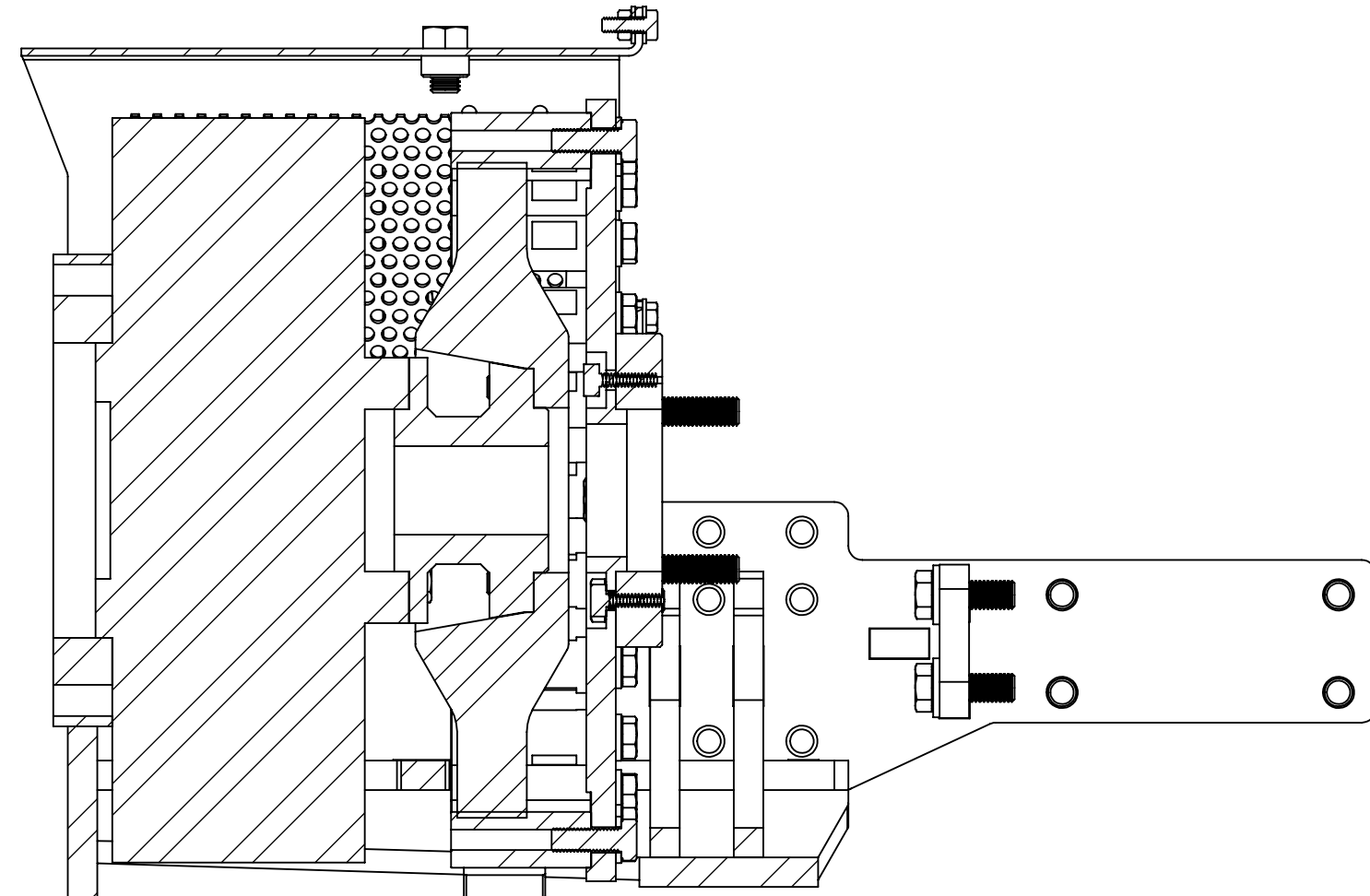
1



B



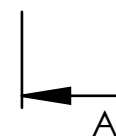
B



SECTION A-A
SCALE 1 : 3

A

A



4

3

2

1

	UNLESS OTHERWISE SPECIFIED:			DWG. NO.		
	DIMENSIONS ARE IN INCHES			DRAWN BY:	NAME	DATE
	TOLERANCES:			APPROVED BY:	System Administrator	06/21/2022
	FRACTIONAL ±1/32			MATERIAL:		
ANGULAR: MACH ±1 BEND ±1			FINISH:			
TWO PLACE DECIMAL ±.030			WEIGHT:			
THREE PLACE DECIMAL ±.005			COMMENTS:			
PROPRIETARY AND CONFIDENTIAL			TITLE:			
THE INFORMATION CONTAINED IN THIS DRAWING IS THE SOLE PROPERTY OF MER EQUIPMENT. ANY REPRODUCTION IN PART OR AS A WHOLE WITHOUT THE WRITTEN PERMISSION OF MER EQUIPMENT IS PROHIBITED.			SEADRIVE, fPTO, CUMMINS, QSL9. H49 CLUTCH, SAE C PAD. FOR USE WITH DA9577 OR DA9150. REQUIRES 3939088			
SIZE		PART NO.		REV		
B		SD-CU03P09-1-CM800B		A		
DO NOT SCALE DRAWING				SHEET 2 OF 2		