

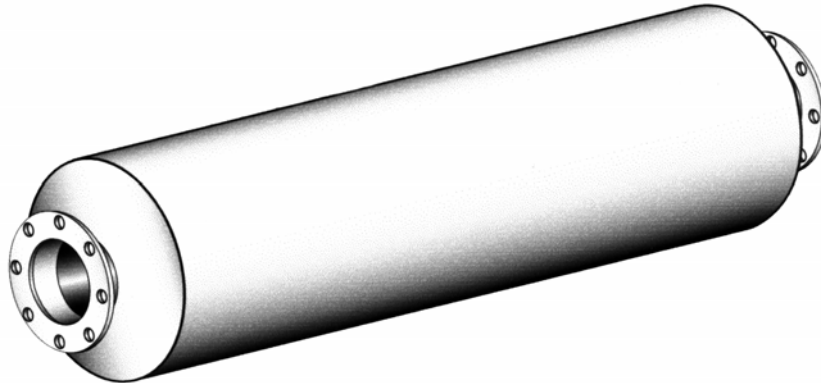


EM PRODUCTS™
PHILLIPS & TEMRO INDUSTRIES

Low Pressure Drop Silencers

Model TBU Series

Critical Grade/Low Pressure Drop Design



Standard Silencer Application

- Heavy-duty critical grade series silencer
- Recommended for use on turbo charged engines
- Effective noise reduction in critical areas

Standard Construction Features

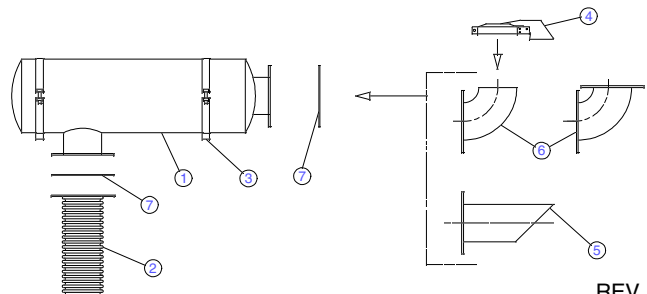
- High temperature (1200° F.) satin black finish
- Can be mounted vertically or horizontally
- Straight-through absorption type

Optional Construction Features and Accessories

- Stainless steel and aluminum construction
- Drains available
- Complete line of engine exhaust accessories

Engine Exhaust Silencer & Accessories:

- | | |
|-------------------|--------------------|
| 1. Silencer | 5. Mitered Exhaust |
| 2. Flex Connector | 6. Elbows |
| 3. Mounting Band | 7. Flange / Gasket |
| 4. Rain Cap | |



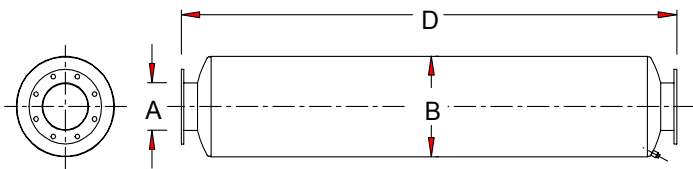
REV. 01/99
99EC-3000



Low Pressure Drop—"TBU" Series

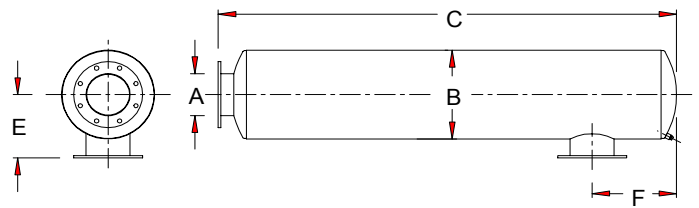
Critical Grade

End Inlet / End Outlet



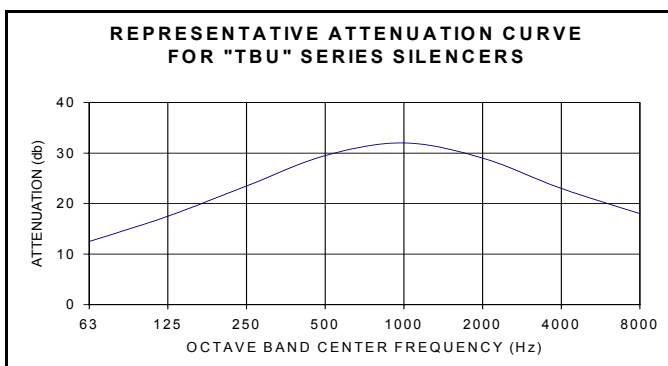
Part Number	A	B	D	WT
TBUE-04-980849	4	10	54	72
TBUE-05-980850	5	10	54	72
TBUE-06-980851	6	12	66	90
TBUE-08-980638	8	14	78	145
TBUE-10-980260	10	16	82	205
TBUE-12-980435	12	22	89	340
TBUE-14-980436	14	26	110	475
TBUE-16-980437	16	26	132	680
TBUE-18-980438	18	36	184	1500
TBUE-20-980439	20	42	198	1800
TBUE-22-980440	22	48	200	2300
TBUE-24-980441	24	54	262	4000

Side Inlet / End Outlet



Part Number	A	B	C	E	F	WT
TBUS-04-980445	4	10	51	9	4	72
TBUS-05-980446	5	10	51	9	4	72
TBUS-06-980447	6	12	63	10	5	90
TBUS-08-980448	8	14	75	11	6	145
TBUS-10-980449	10	16	79	12	10	205
TBUS-12-980450	12	22	86	15	11	340
TBUS-14-980451	14	26	107	17	12	475
TBUS-16-980452	16	26	129	17	14	680
TBUS-18-980453	18	36	181	22	18	1500
TBUS-20-980454	20	42	195	25	19	1800
TBUS-22-980455	22	48	197	28	21	2300
TBUS-24-980456	24	54	259	31	22	4000

Note: Standard with 150 # ANSI drilled plate flange connections. Dimensions in inches, weights in pounds. Dimensions and weights are nominal and may vary slightly with production models



- Typical Reduction = 17—22 dBA
- Carbon Steel Construction
- Stainless Steel Construction Available
- Contact Factory for Custom Fit Applications

3200-011