

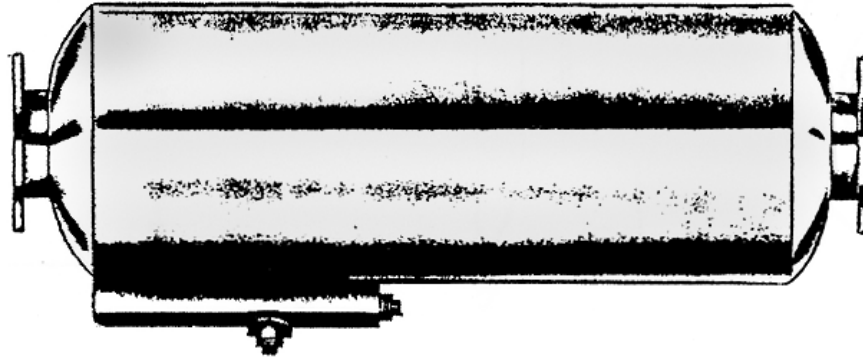


EM PRODUCTS™

PHILLIPS & TEMRO INDUSTRIES

Spark Arrestor Silencers

Model SRU Series



Standard Silencer Application

- Exhaust spark arrestor
- Designed for use on internal combustion engines
- Effective in residential/critical areas where reduction of incandescent carbon to atmosphere is desirable

Standard Construction Features

- Easy access cleanouts
- Reactive type silencer
- Can be mounted vertically or horizontally
- High temperature (1200° F.) satin black finish

Optional Construction Features and Accessories

- Complete line of accessories
- Larger sizes available upon request

Side inlet/end outlet connection style available on Model SRU and Model SSU. Please consult factory for additional information.

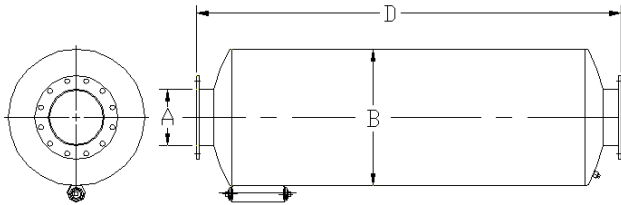
REV. 01/99
99EC-4000



Spark Arrestors—“SRU” Series

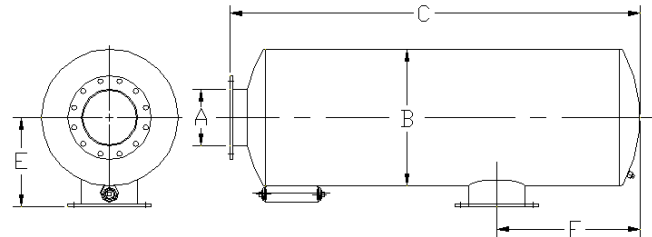
Residential Grade

End Inlet / End Outlet



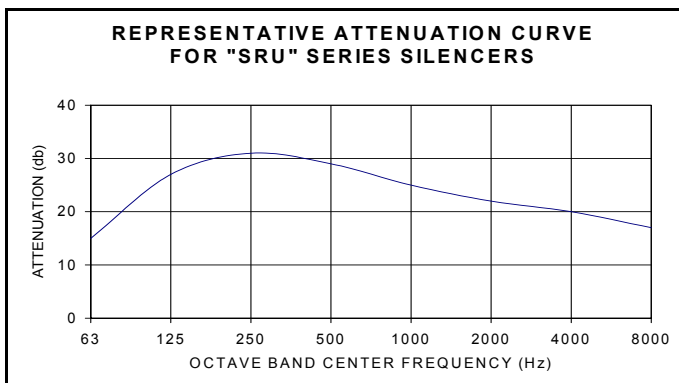
| Part Number | A | B | D | WT |
|----------------|-----|----|-----|------|
| SRUE-25-980350 | 2.5 | 10 | 36 | 60 |
| SRUE-03-980351 | 3 | 10 | 36 | 65 |
| SRUE-35-980352 | 3.5 | 14 | 42 | 95 |
| SRUE-04-980353 | 4 | 14 | 42 | 102 |
| SRUE-05-980354 | 5 | 14 | 66 | 152 |
| SRUE-06-980355 | 6 | 18 | 61 | 202 |
| SRUE-08-980356 | 8 | 22 | 73 | 325 |
| SRUE-10-980357 | 10 | 26 | 93 | 505 |
| SRUE-12-980358 | 12 | 30 | 112 | 755 |
| SRUE-14-980359 | 14 | 36 | 108 | 1005 |
| SRUE-16-980360 | 16 | 42 | 111 | 1115 |
| SRUE-18-980361 | 18 | 48 | 118 | 1565 |
| SRUE-20-980362 | 20 | 48 | 142 | 1805 |
| SRUE-22-980363 | 22 | 54 | 144 | 2195 |
| SRUE-24-980364 | 24 | 60 | 144 | 2425 |

Side Inlet / End Outlet



| Part Number | A | B | C | E | F | WT |
|----------------|-----|---------------|--------|----|-------|------|
| SRUS-25- | 2.5 | Not Available | | | | |
| SRUS-03- | 3 | | | | | |
| SRUS-35- | 3.5 | | | | | |
| SRUS-04-981304 | 4 | 14 | 39.50 | 11 | 5.50 | 102 |
| SRUS-05-981305 | 5 | 14 | 63.50 | 11 | 7.00 | 152 |
| SRUS-06-981306 | 6 | 18 | 57.50 | 13 | 8.25 | 202 |
| SRUS-08-981307 | 8 | 22 | 69.50 | 17 | 9.75 | 325 |
| SRUS-10-981308 | 10 | 26 | 89.50 | 19 | 11.50 | 505 |
| SRUS-12-981309 | 12 | 30 | 109.00 | 20 | 13.25 | 755 |
| SRUS-14-981310 | 14 | 36 | 105.50 | 24 | 15.00 | 1005 |
| SRUS-16-981311 | 16 | 42 | 109.00 | 27 | 16.50 | 1115 |
| SRUS-18-981406 | 18 | 48 | 115.00 | 33 | 19.00 | 1565 |
| SRUS-20-981312 | 20 | 48 | 139.00 | 33 | 20.00 | 1805 |
| SRUS-22-981313 | 22 | 54 | 140.50 | 36 | 22.00 | 2195 |
| SRUS-24-981314 | 24 | 60 | 142.50 | 39 | 23.50 | 2425 |

Note: 3 1/2 inch and smaller standard with male NPT connections; 4 inch and larger standard with 150 # ANSI drilled plate flange connections. Dimensions in inches, weights in pounds. Dimensions and weights are nominal and may vary slightly with production models



- Typical Reduction = 18—25 dBA
- Carbon Steel Construction
- Stainless Steel Construction Available
- Contact Factory for Custom Fit Applications

3200-013