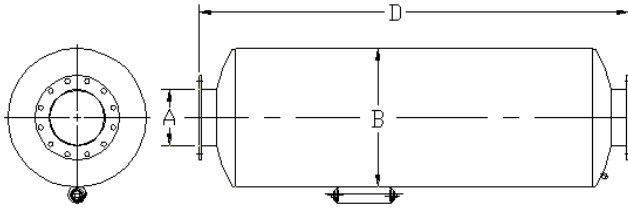




Spark Arrestors—“SHU” Series

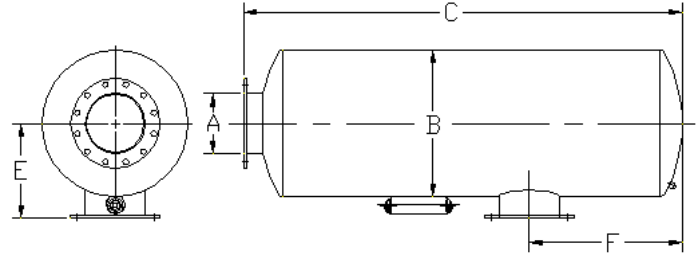
Hospital Grade

End Inlet / End Outlet



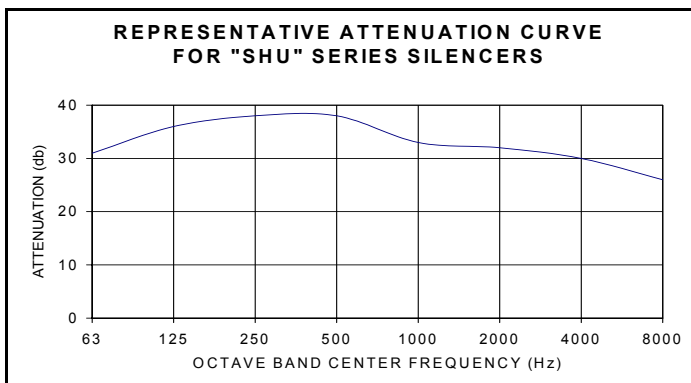
Part Number	A	B	D	WT
SHUE-25-981443	2.5	Consult Factory		
SHUE-03-981444	3			
SHUE-35-981445	3.5			
SHUE-04-981446	4	16	59300	150
SHUE-05-981447	5	18	72.00	195
SHUE-06-981448	6	18	80.00	212
SHUE-08-981449	8	26	96.00	470
SHUE-10-981450	10	30	110.00	700
SHUE-12-981451	12	36	126.00	870
SHUE-14-981452	14	42	138.00	1380
SHUE-16-981453	16	42	163.00	1620
SHUE-18-981454	18	48	205.50	2920
SHUE-20-981455	20	60	220.00	4950
SHUE-22-981456	22	60	220.00	4970
SHUE-24-981457	24	66	244.00	6670

Side Inlet / End Outlet



Part Number	A	B	C	E	F	WT
SHUS-25-981458	2.5	Consult Factory				
SHUS-03-981459	3					
SHUS-35-981460	3.5					
SHUS-04-981461	4	16	56.00	12.00	6.75	150
SHUS-05-981462	5	18	69.00	13.00	7.75	195
SHUS-06-981463	6	18	78.00	13.00	8.25	212
SHUS-08-981464	8	26	9.50	19.00	10.50	40
SHUS-10-981465	10	30	108.00	20.00	12.25	700
SHUS-12-981466	12	36	122.00	24.00	14.50	870
SHUS-14-981467	14	42	135.00	27.00	15.50	1380
SHUS-16-981468	16	42	159.00	27.00	16.50	1620
SHUS-18-981469	18	48	201.50	33.00	19.00	2920
SHUS-20-981470	20	60	216.00	39.00	21.50	4950
SHUS-22-981471	22	60	216.00	39.00	22.50	4970
SHUS-24-981472	24	66	241.00	42.00	24.00	6670

Note: 3 1/2 inch and smaller standard with male NPT connections; 4 inch and larger standard with 150 # ANSI drilled plate flange connections. Dimensions in inches, weights in pounds. Dimensions and weights are nominal and may vary slightly with production models



- Typical Reduction = 32 – 38 dBA
- Carbon Steel Construction
- Stainless Steel Construction Available
- Contact Factory for Custom Fit Applications

3200-015