



**EM PRODUCTS™**  
PHILLIPS & TEMRO INDUSTRIES

# Engine Exhaust Silencers

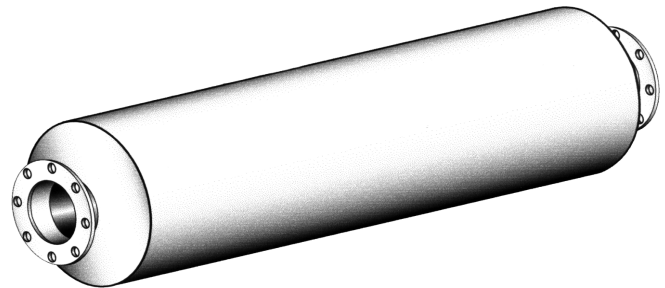
## Model JI Series Industrial Grade

### Standard Silencer Application

- Heavy-duty industrial grade series silencer
- Designed for heavy duty stationary, marine systems and mobile power units
- Silencing is sufficient for commercial or industrial areas where ambient noise is relatively high

### Standard Construction Features

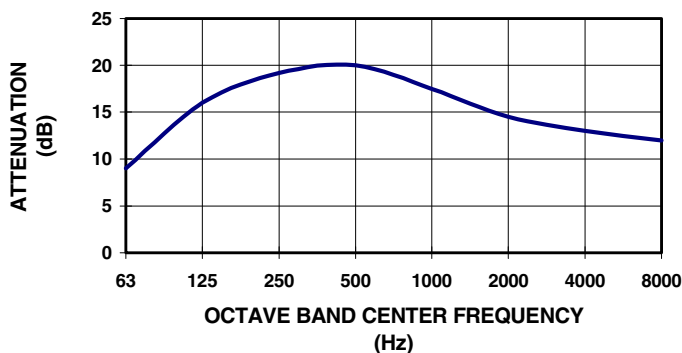
- Aluminized steel standard for silencers up to 26 inch body diameter
- Silencers larger than 28 inch body diameter standard carbon steel
- All welded steel construction
- Can be mounted vertically or horizontally
- Standard high temperature (1200° F.) satin black finish
- Drains standard item
- Standard npt inlet and discharge connections on sizes 2 inch to 3.5 inch
- Standard 125/150# ASA drilled plate flanges on inlet and discharge of silencers 4 inch and larger
- Two-chamber design



### Optional Construction Features and Accessories

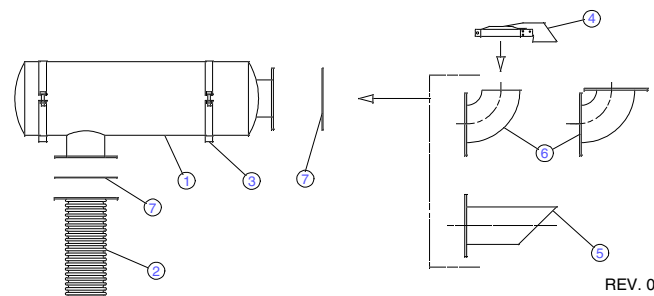
- Stainless steel and aluminum construction
- Special inlet and outlet connections
- Special inlet and outlet locations
- Special finishes available
- Vertical mounting legs
- Horizontal mounting saddles
- Mounting bands
- Horizontal and vertical shell legs
- Special acoustical designs
- Internal and external shell lagging
- Inspection openings
- Air leak tests
- ASME code construction
- Complete line of engine exhaust accessories

**REPRESENTATIVE ATTENUATION CURVE  
FOR "JI" SERIES SILENCER**



### Engine Exhaust Silencer & Accessories:

- |                   |                    |
|-------------------|--------------------|
| 1. Silencer       | 5. Mitered Exhaust |
| 2. Flex Connector | 6. Elbows          |
| 3. Mounting Band  | 7. Flange / Gasket |
| 4. Rain Cap       |                    |



REV. 01/99  
99EC-1000

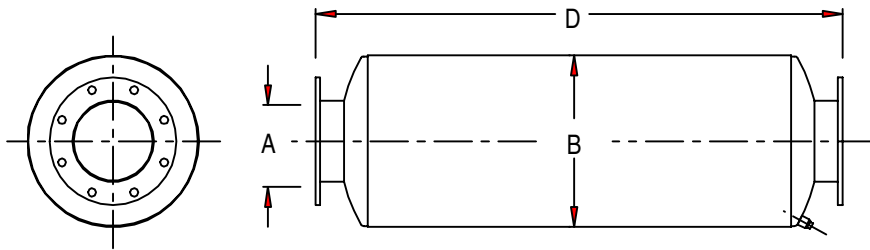


# Engine Exhaust Silencers

## Model JI Series – Industrial Grade

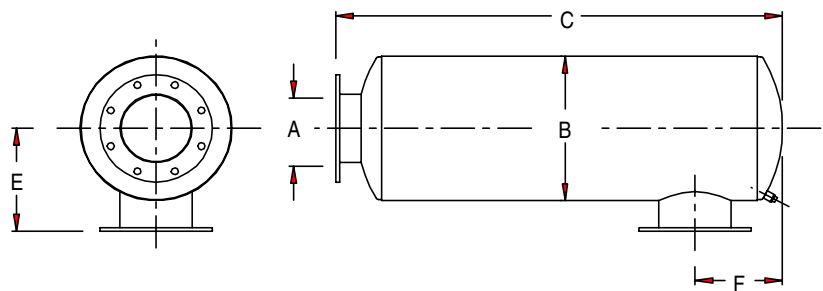
Average Attenuation Curve: 12 – 18 dBA

End Inlet/End Outlet



2 inch to 3 1/2 inch standard with male NPT connections; 4 inch and larger standard with 125/150# ANSI drilled plate flange connections.

Side Inlet/End Outlet



End Inlet/End Outlet					
Model No.	Part No.	A	B	D	WT
JIE-02	300060	2	6	24	12
JIE-25	300061	2.5	8	24	18
JIE-03	300062	3	8	25	20
JIE-35	300063	3.5	10	31	30
JIE-04	300064	4	10	32	31
JIE-05	300065	5	12	44	45
JIE-06	300066	6	12	44	50
JIE-08	300067	8	18	56	120
JIE-10	300068	10	22	72	180
JIE-12	300069	12	26	72	250
JIE-14	300070	14	30	84	375
JIE-16	300071	16	36	100	470
JIE-18	300072	18	42	104	1155
JIE-20	300073	20	48	103	1360

Side Inlet/End Outlet							
Model No.	Part No.	A	B	C	E	F	WT
JIS-02	400090	2	6	22	5.5	3.0	12
JIS-25	400091	2.5	8	22	6.5	3.7	18
JIS-03	400092	3	8	22	7	4.2	20
JIS-35	400093	3.5	10	29	8	5	30
JIS-04	400094	4	10	29.5	8.5	5.5	31
JIS-05	400095	5	12	41.6	10	7.6	50
JIS-06	400096	6	12	41.6	10	7.6	50
JIS-08	400097	8	18	54.5	13	10.5	120
JIS-10	400098	10	22	69	15	15	180
JIS-12	400099	12	26	69.5	17	17	250
JIS-14	400100	14	30	82	19	20	375
JIS-16	400101	16	36	97	22	23	470
JIS-18	400102	18	42	101	25	26.5	1155
JIS-20	400103	20	48	101.5	28	26	1360

• Larger sizes available upon request.  
 Dimensions in inches, weights in pounds. Dimensions and weights are nominal and may vary slightly with production models.  
 Request certified drawings for exact dimensions.