



**EM PRODUCTS™**  
PHILLIPS & TEMRO INDUSTRIES

# Engine Exhaust Silencers

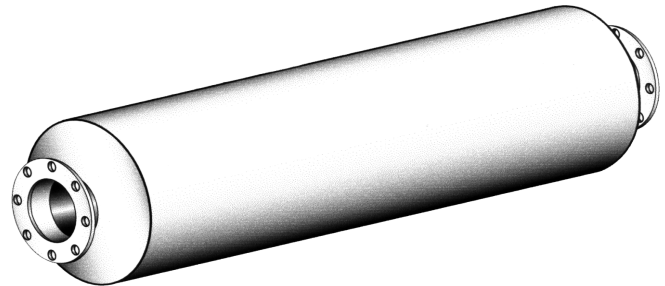
## Model JH Series Hospital Grade

### Standard Silencer Application

- Heavy-duty hospital grade series silencer
- Designed for heavy duty stationary, marine systems and mobile power units
- JH Series is a premium, critical degree silencer for use in low-ambient noise area where the standard critical grade silencer will not satisfactorily control the noise problem

### Standard Construction Features

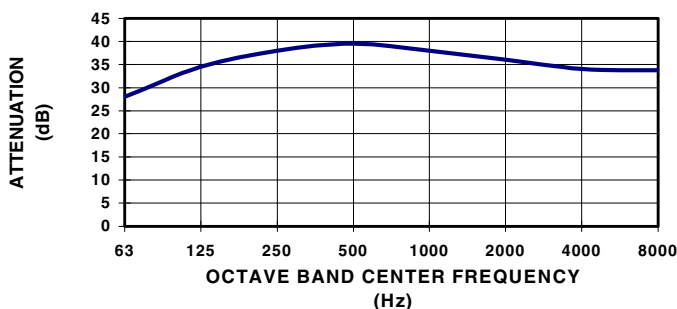
- Aluminized steel standard for silencers up to 26 inch body diameter
- Silencers larger than 28 inch body diameter standard carbon steel
- All welded steel construction
- Can be mounted vertically or horizontally
- Standard high temperature (1200° F.) satin black finish
- Drains standard item
- Standard npt inlet and discharge connections on sizes 2 inch to 3.5 inch
- Standard 125/150# ASA drilled plate flanges on inlet and discharge of silencers 4 inch and larger
- Multi-chamber design
- Effectively attenuates the full range of sound frequencies



### Optional Construction Features and Accessories

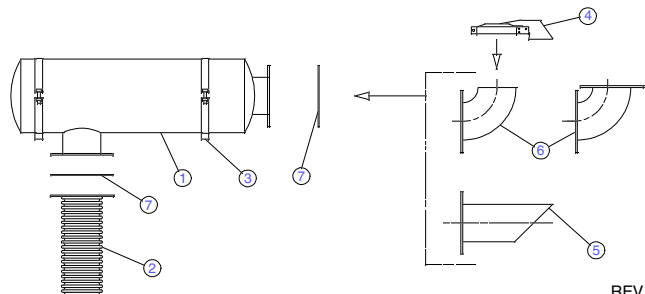
- Stainless steel and aluminum construction
- Special inlet and outlet connections
- Special inlet and outlet locations
- Special finishes available
- Vertical mounting legs
- Horizontal mounting saddles
- Mounting bands
- Horizontal and vertical shell legs
- Special acoustical designs
- Internal and external shell lagging
- Inspection openings
- Air leak tests
- ASME code construction
- Complete line of engine exhaust accessories

**REPRESENTATIVE ATTENUATION CURVE  
FOR "JH" SERIES SILENCER**



### Engine Exhaust Silencer & Accessories:

- |                   |                    |
|-------------------|--------------------|
| 1. Silencer       | 5. Mitered Exhaust |
| 2. Flex Connector | 6. Elbows          |
| 3. Mounting Band  | 7. Flange / Gasket |



REV. 01/99  
99EC-1000

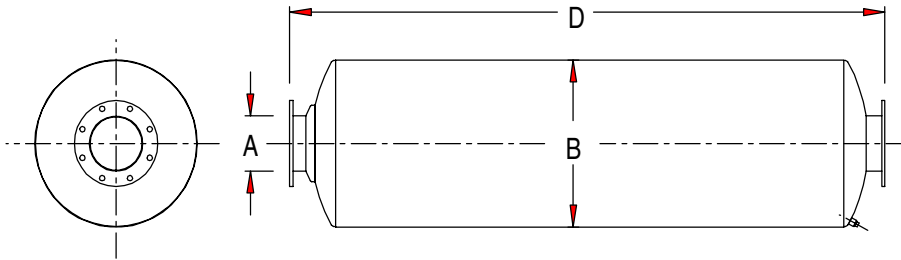


# Engine Exhaust Silencers

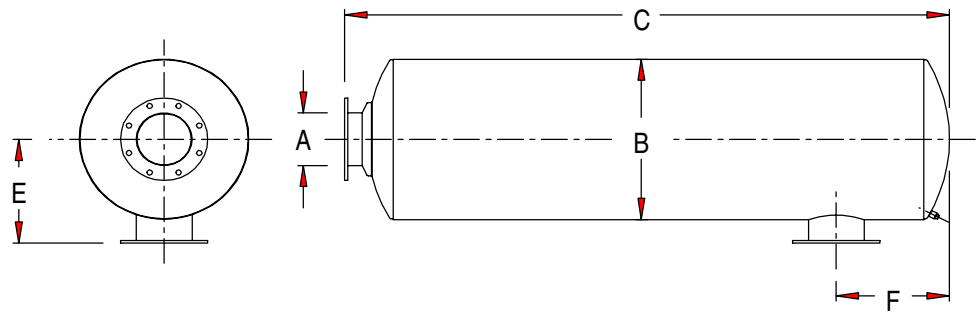
## Model JH Series – Hospital Grade

Average Attenuation Curve: 35 – 40 dBA

End Inlet/End Outlet



Side Inlet/End Outlet



2 inch to 3 1/2 inch standard with male NPT connections; 4 inch and larger standard with 125/150# ANSI drilled plate flange connections.

End Inlet/End Outlet					
Model No.	Part No.	A	B	D	WT
JHE-02	105030	2	10	44	55
JHE-25	105031	2.5	12	46	75
JHE-03	105032	3	12	46	75
JHE-35	105033	3.5	14	60	110
JHE-04	105034	4	14	60	115
JHE-05	105035	5	18	68	180
JHE-06	105036	6	18	68	185
JHE-08	105037	8	26	96	460
JHE-10	105038	10	30	110	680
JHE-12	105039	12	36	126	855
JHE-14	105040	14	42	138	1370
JHE-16	10541	16	42	162	1600
JHE-18	105042	18	48	205.5	2650
JHE-20	105051	20	60	220	4500

Side Inlet/End Outlet							
Model No.	Part No.	A	B	C	E	F	WT
JHS-02	205170	2	10	41.5	8.5	5.5	55
JHS-25	205171	2.5	12	42.5	10	7.75	75
JHS-03	205172	3	12	42.5	10	7.75	75
JHS-35	205173	3.5	14	56.5	11	9.5	110
JHS-04	205174	4	14	56.5	11	9.5	115
JHS-05	205175	5	18	66.5	13	10.5	180
JHS-06	205176	6	18	66.5	13	10.5	185
JHS-08	205177	8	26	93.5	17	17.5	460
JHS-10	205178	10	30	108	19	20	680
JHS-12	205179	12	36	122	22	23	855
JHS-14	205180	14	42	135	25	24	1370
JHS-16	205181	16	42	159	25	28	1600
JHS-18	205182	18	48	201.5	28	38	2650
JHS-20	205219	20	60	216	34	40	4500

• Larger sizes available upon request.  
 Dimensions in inches, weights in pounds. Dimensions and weights are nominal and may vary slightly with production models.  
 Request certified drawings for exact dimensions.