



EM PRODUCTS™
PHILLIPS & TEMRO INDUSTRIES

Engine Exhaust Silencers

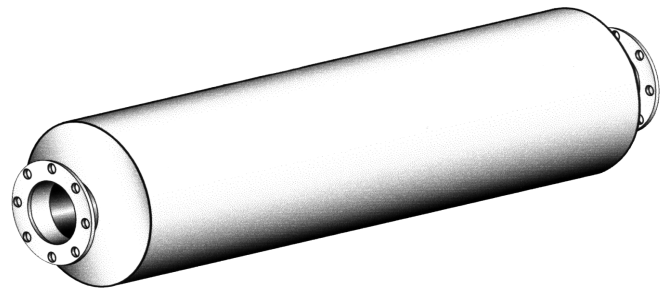
Model JC Series Critical Grade

Standard Silencer Application

- Heavy-duty critical grade series silencer
- Designed for heavy duty stationary, marine systems and mobile power units
- JC Series silencers provide a high degree of silencing where the ambient noise level is very low and a high quality silencer is required

Standard Construction Features

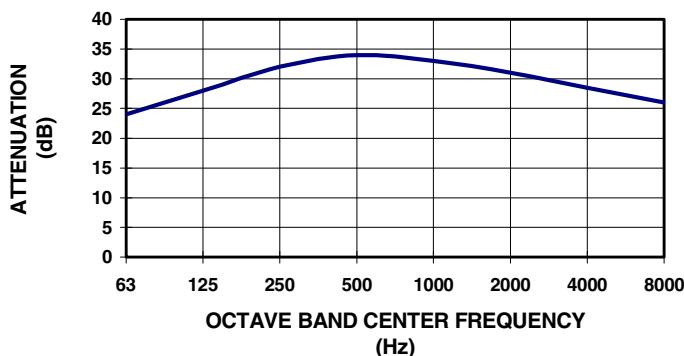
- Aluminized steel standard for silencers up to 26 inch body diameter
- Silencers larger than 28 inch body diameter standard carbon steel
- All welded steel construction
- Can be mounted vertically or horizontally
- Standard high temperature (1200° F.) satin black finish
- Drains standard item
- Standard npt inlet and discharge connections on sizes 2 inch to 3.5 inch
- Standard 125/150# ASA drilled plate flanges on inlet and discharge of silencers 4 inch and larger
- Multi-chamber design



Optional Construction Features and Accessories

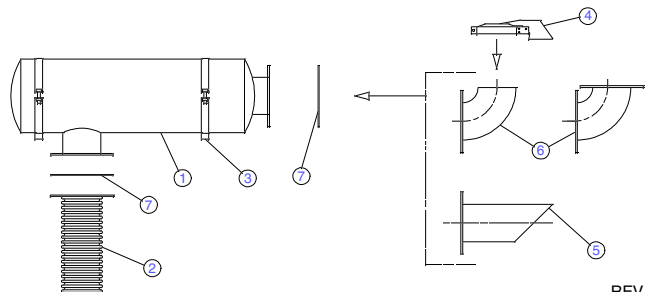
- Stainless steel and aluminum construction
- Special inlet and outlet connections
- Special inlet and outlet locations
- Special finishes available
- Vertical mounting legs
- Horizontal mounting saddles
- Mounting bands
- Horizontal and vertical shell legs
- Special acoustical designs
- Internal and external shell lagging
- Inspection openings
- Air leak tests
- ASME code construction
- Complete line of engine exhaust accessories

REPRESENTATIVE ATTENUATION CURVE FOR "JC" SERIES SILENCER



Engine Exhaust Silencer & Accessories:

- | | |
|-------------------|--------------------|
| 1. Silencer | 5. Mitered Exhaust |
| 2. Flex Connector | 6. Elbows |
| 3. Mounting Band | 7. Flange / Gasket |



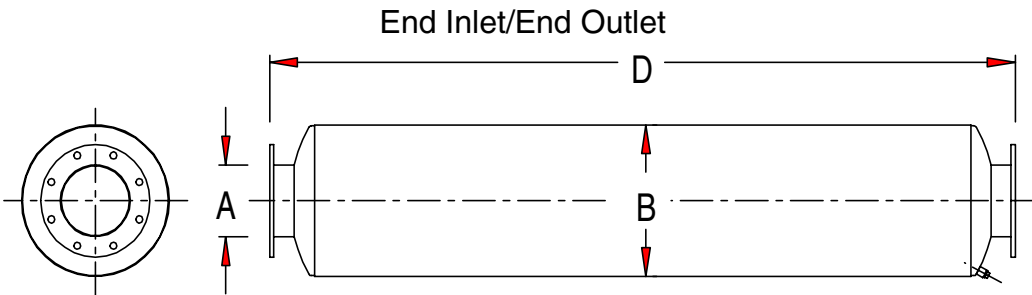
REV. 01/99
99EC-1000



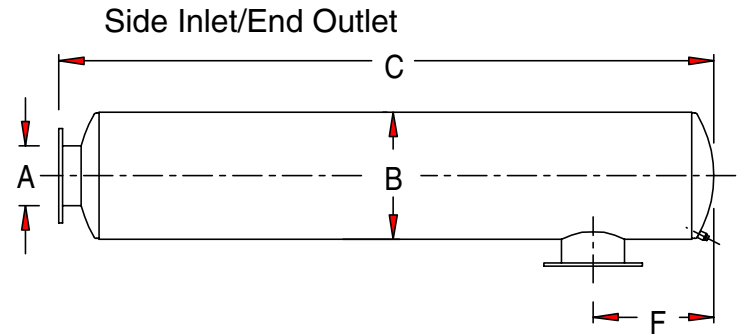
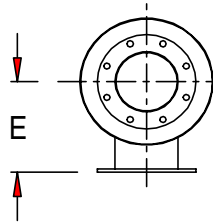
Engine Exhaust Silencers

Model JC Series – Critical Grade

Average Attenuation Curve: 25 – 34 dBA



1 1/2 inch to 3 1/2 inch standard with male NPT connections; 4 inch and larger standard with 125/150# ANSI drilled plate flange connections.



End Inlet/End Outlet					
Model No.	Part No.	A	B	D	WT
JCE-15	100070	1.5	6	30	10
JCE-02	100071	2	6	42	29
JCE-25	100072	2.5	8	42	38
JCE-03	100073	3	8	43	43
JCE-35	100074	3.5	10	55	72
JCE-04	100075	4	10	56	72
JCE-05	100076	5	12	68	81
JCE-06	100077	6	12	68	84
JCE-08	100078	8	18	92	249
JCE-10	100079	10	22	108	370
JCE-12	100080	12	26	120	506
JCE-14	100081	14	30	132	743
JCE-16	100082	16	36	160	1050
JCE-18	100083	18	42	174	1750
JCE-20	100084	20	48	203	2550

Side Inlet/End Outlet							
Model No.	Part No.	A	B	C	E	F	WT
JCS-15	200380	1.5	6	27.75	5	5.25	10
JCS-02	200381	2	6	39.75	5.5	7.25	29
JCS-25	200382	2.5	8	39.88	6.5	7.38	38
JCS-03	200383	3	8	40.62	7	7.38	43
JCS-35	200384	3.5	10	53.0	8	9.25	72
JCS-04	200385	4	10	53.5	8.5	9.25	72
JCS-05	200386	5	12	65.62	10	12.25	81
JCS-06	200387	6	12	65.62	10	12.25	84
JCS-08	200388	8	18	90.50	13	16.5	249
JCS-10	200389	10	22	105.0	15	20.0	370
JCS-12	200390	12	26	117.5	17	21.5	506
JCS-14	200391	14	30	130.0	19	23.0	743
JCS-16	200392	16	36	157.0	22	29.0	1050
JCS-18	200393	18	42	171.5	25	33.0	1750
JCS-20	200467	20	48	199.0	27	36.0	2550

• Larger sizes available upon request.

Dimensions in inches, weights in pounds. Dimensions and weights are nominal and may vary slightly with production models. Request certified drawings for exact dimensions.