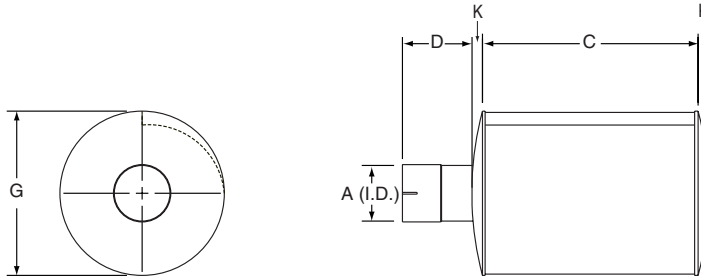




TXS Critical Grade - SR Model

Typical Insertion Loss 28-33 dbA*



Features

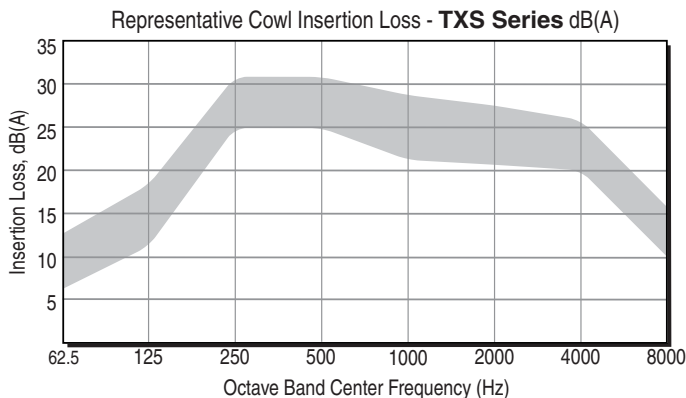
- Compact Spiral Chamber Design
- Premium Silencing
- Low Back Pressure
- Low Weight
- Aluminized Steel Construction
Maximum Temp: 1200 °F (650 °C)
- Standard High-Temperature Finish
- All MIG Welded Construction
- Steel Wool and Mesh Liner
- Slip-fit Connections Standard

Options

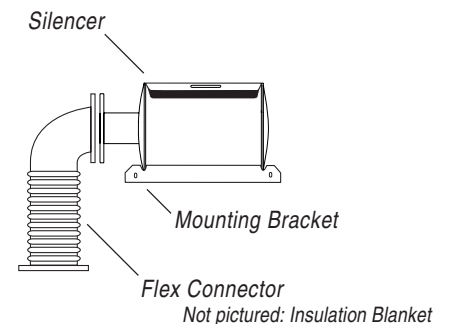
- Factory Customization Available
- 316L Stainless Steel Construction
- Reverse Flow
- Inlet/Outlet Configurations
- 125/150# A.N.S.I. Flange Connections
- Male/Female N.P.T. Connections
- Exterior Finishes
- Complete line of Accessories and Mounting Brackets

*Actual insertion loss value may vary by application.
All measurements in inches unless otherwise noted.

COWL Model No.	COWL Part No.	Inlet A dia. (I.D.)	C	D	G	K	Approximate Weight
TXS15SR	TXS15SR000	1.50	5.24	2.50	8.81	0.50	11 lbs
TXS20SR	TXS20SR000	2.00	7.24	3.50	8.81	0.50	17 lbs
TXS25SR	TXS25SR000	2.50	8.24	3.25	11.81	0.75	28 lbs
TXS30SR	TXS30SR000	3.00	9.24	5.00	16.06	1.00	52 lbs
TXS35SR	TXS35SR000	3.50	11.49	5.00	16.06	1.00	61 lbs
TXS40SR	TXS40SR000	4.00	15.49	5.00	16.06	1.00	75 lbs
TXS45SR	TXS45SR000	4.50	12.49	4.55	19.38	1.45	71 lbs
TXS50SR	TXS50SR000	5.00	16.49	4.55	19.38	1.45	96 lbs
TXS60SR	TXS60SR000	6.00	22.49	4.55	19.38	1.45	120 lbs
TXS70SR	TXS70SR000	8.00	15.41	6.55	26.50	1.45	140 lbs
TXS80SR	TXS80SR000	8.00	24.33	6.55	26.50	1.45	220 lbs
TXS100SR	TXS100SR000	10.00	30.08	6.25	34.00	1.75	330 lbs
TXS120SR	TXS120SR000	12.00	36.08	5.75	40.00	2.25	475 lbs



Engine Exhaust Silencer & Accessories



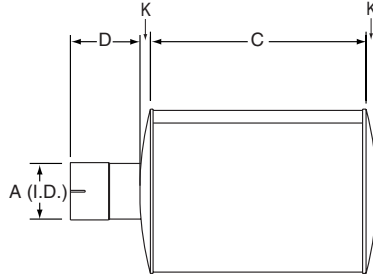
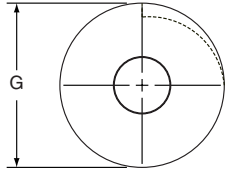
TXS-SR



TXS Critical Grade - SR Model

Typical Insertion Loss 28-33 dbA*

Metric Units



Features

- Compact Spiral Chamber Design
- Premium Silencing
- Low Back Pressure
- Low Weight
- Aluminized Steel Construction
Maximum Temp: 1200 °F (650 °C)
- Standard High-Temperature Finish
- All MIG Welded Construction
- Steel Wool and Mesh Liner
- Slip-fit Connections Standard

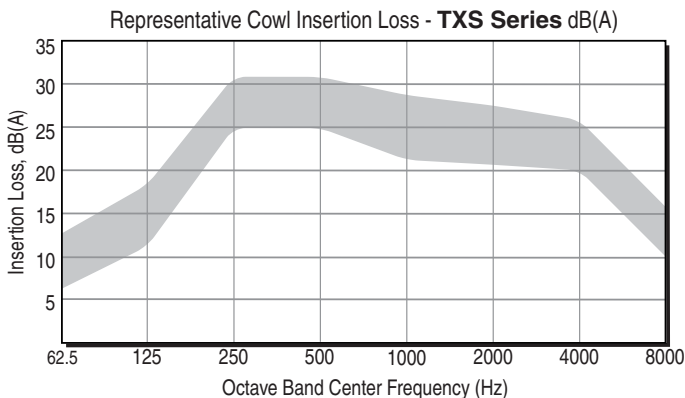
Options

- Factory Customization Available
- 316L Stainless Steel Construction
- Reverse Flow
- Inlet/Outlet Configurations
- 125/150# A.N.S.I. Flange Connections
- Male/Female N.P.T. Connections
- Exterior Finishes
- Complete line of Accessories and Mounting Brackets

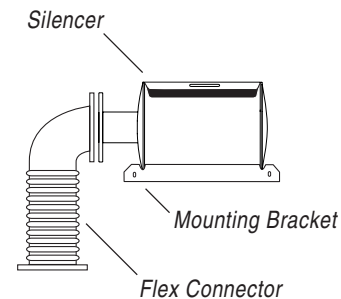
*Actual insertion loss value may vary by application.

All measurements in millimeters unless otherwise noted.

COWL Model No.	COWL Part No.	Inlet A dia. (I.D.)	C	D	G	K	Approximate Weight
TXS15SR	TXS15SR000	38	133	64	224	13	5 kg
TXS20SR	TXS20SR000	51	184	89	224	13	8 kg
TXS25SR	TXS25SR000	64	209	83	300	19	13 kg
TXS30SR	TXS30SR000	76	235	127	408	25	24 kg
TXS35SR	TXS35SR000	89	292	127	408	25	28 kg
TXS40SR	TXS40SR000	102	393	127	408	25	34 kg
TXS45SR	TXS45SR000	114	317	116	492	37	33 kg
TXS50SR	TXS50SR000	127	419	116	492	37	44 kg
TXS60SR	TXS60SR000	152	571	116	492	37	55 kg
TXS70SR	TXS70SR000	203	391	166	673	37	64 kg
TXS80SR	TXS80SR000	203	618	166	673	37	100 kg
TXS100SR	TXS100SR000	254	764	159	864	44	150 kg
TXS120SR	TXS120SR000	305	916	146	1016	57	216 kg



Engine Exhaust Silencer & Accessories



Not pictured: Insulation Blanket